

# SKY DIVER™

## GAME PROGRAM™ INSTRUCTIONS



Model CX2629

  
**ATARI®**



A Warner Communications Company

**ATARI, INC., Consumer Division**  
**1195 Borregas Ave., Sunnyvale, CA 94086**



Use your Joystick Controllers with this ATARI® Game Program.™ Be sure the Controllers are firmly plugged into the LEFT and RIGHT CONTROLLER jacks at the rear of your ATARI Video Computer System.™ Hold the Controller with the red button to your upper left toward the television screen.

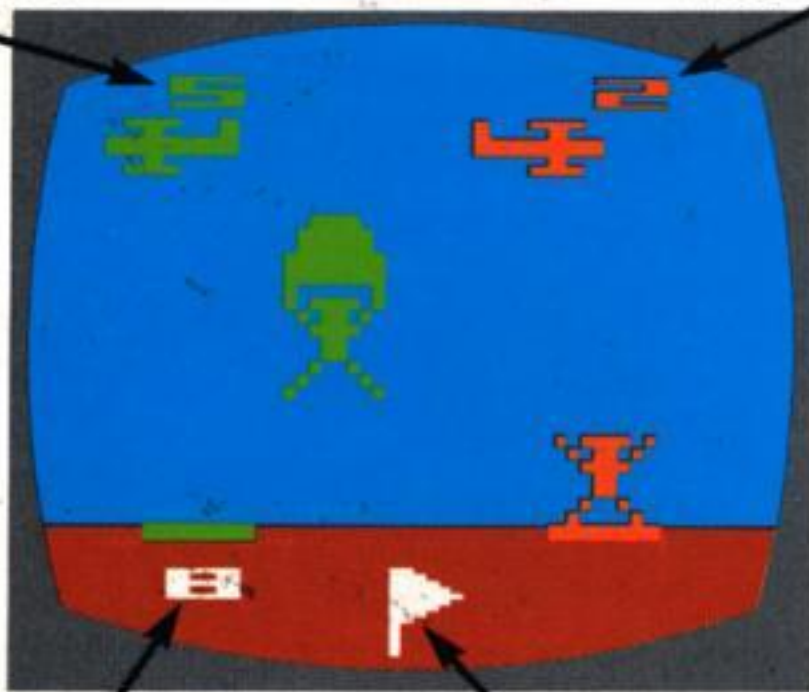


**Note:** Always turn the console power switch OFF when inserting or removing an ATARI Game Program. This will protect the electronic components and prolong the life of your ATARI Video Computer System.

## HOW TO PLAY

GAME NUMBER  
LEFT PLAYER'S  
SCORE

RIGHT PLAYER'S  
SCORE



NUMBER OF JUMPS  
REMAINING

WIND SOCK

Your initial task is to guide the Sky Diver™ onto the landing pad. Your ultimate task is to score more points than your opponent. To hit the landing pad and score points you must:

- Release the Sky Diver from the airplane.
- Open the parachute.
- Control the downward drift of the Sky Diver.
- Land squarely on the pad at the bottom of the screen.

There are five two-player games in Sky Diver. You and your opponent have nine jumps each in which to score points. See the SCORING section for details.

Both planes fly across the screen simultaneously, but in opposite directions.

## Wind Factor



**Wind Blowing  
to the Left**

You must contend with a varying wind factor during each jump (except in Games 3 and 4). The "wind sock" at the bottom, center of the screen indicates the direction and the speed of the wind.



**Wind Blowing  
to the Right**

If the sock is pointing to the right, the wind is blowing to the right, and conversely for the left. If the sock is hanging loosely, the wind speed is slower than when the sock is flying rigidly and taut.



**Fastest  
Wind**

**Medium  
Wind**

**Slowest  
Wind**

**No Wind**

The wind factor changes between jumps and may vary slightly during a jump.

## Console Controls

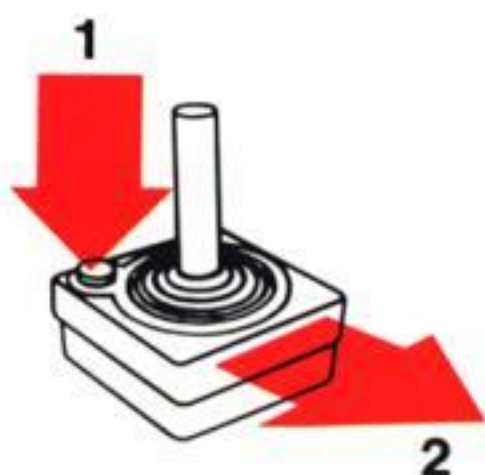
To select a game depress the **game select** switch. The game number is shown in the upper left corner of the screen.



To begin a game depress the **game reset** switch. During game play the number of jumps remaining is shown at the bottom left corner of the screen.

## USING THE CONTROLLERS

The left player uses the left Joystick; the right player uses the right Joystick. You have no control over the flight of the plane across the screen. Here's how to use your Joystick Controller to operate the Sky Diver:



- 1 Push the red button on your Joystick Controller to release the Sky Diver from the plane.
- 2 Pull back on the Joystick (toward yourself) to open the parachute.

- 3 Move the Joystick to the right and to the left to steer the Sky Diver right or left against the wind.



## SCORING

Here's where to combine nerve and skill to beat your opponent. You only score points when your Sky Diver lands squarely on the pad with an open parachute.

**THE LONGER YOU WAIT TO OPEN THE PARACHUTE, THE MORE POINTS YOU SCORE.**

You can score from **0** to **11** points per jump, depending on when you open the chute. There is a point at the bottom of the descent where the parachute can no longer be opened.



If your Sky Diver hits the ground with an unopened chute you lose four points.

The maximum score to shoot for in all games is 99. The right and left scores on the screen represent the right and left players, respectively.

## **HANDICAP (Difficulty Switches)**

Beginning players should start with the **difficulty** switch in the **b** position. In the **a** position, the planes fly significantly faster across the screen, thereby increasing the difficulty.

It is possible for one player to have fast planes (using the **a** position), and the other player to have slow planes (using the **b** position), in the same game.

The difficulty switches have no effect in Game 5. Both planes fly at the faster speed.

## **GAME DESCRIPTIONS**

Games 1 and 2 are identical with one exception. In Game 2 the width of each landing pad is smaller, making it more difficult to score points. The landing pads are placed in different spots for each jump.

In Games 3 and 4 the landing pads move back and forth. There is no wind factor. The landing pads in Game 4 are smaller in width.

Play "chicken" in Game 5 with your opponent. There's only one landing pad in the middle of the screen. the first player to land squarely on the pad scores points; the other player receives no points for that jump.



 A Warner Communications Company